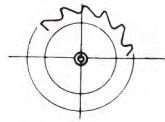
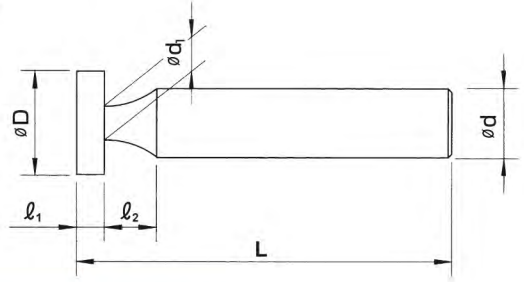


KC 直柄鍵槽銑刀

Keyseat Cutters



單面切削



刃徑許容差	8~16	+0.3 +0.18
	18~28	+0.35 +0.21
	30~45	+0.43 +0.26
	50~60	+0.5 +0.3

刃長許容差	0.5~ 3	-0.014 -0.028
	3.5~ 6	-0.02 -0.038
	7~10	-0.025 -0.047
	11~12	-0.032 -0.059

單位：mm



刃徑 (D)	刃長 (l ₁)	首徑 (d ₁)	柄徑 (d)	柄長 (l)	全長 (L)	刃數 (N)	價(支)格
8	0.5	3.7	8	39	50	8	1,925.00
8	0.6	3.7	8	39	50	8	1,925.00
8	0.7	3.7	8	39	50	8	1,925.00
8	0.8	3.7	8	39	50	8	1,925.00
8	1	3.7	8	39	50	8	1,650.00
8	1.2	3.7	8	39	50	8	1,650.00
8	1.5	3.7	8	39	50	8	1,650.00
8	1.6	3.7	8	39	50	8	1,650.00
8	1.7	3.7	8	39	50	8	1,650.00
8	1.8	3.7	8	39	50	8	1,650.00
8	2	3.7	8	39	50	8	1,420.00
8	2.5	3.7	8	39	50	8	1,420.00
8	3	3.7	8	39	50	8	1,420.00
8	3.5	3.7	8	39	50	8	1,420.00
8	4	3.7	8	39	50	8	1,420.00
8	4.5	3.7	8	39	50	8	1,420.00
8	5	3.7	8	39	50	8	1,420.00
10	0.5	4.2	8	39	50	8	1,925.00
10	0.6	4.2	8	39	50	8	1,925.00
10	0.7	4.2	8	39	50	8	1,925.00
10	0.8	4.2	8	39	50	8	1,925.00
10	0.9	4.2	8	39	50	8	1,925.00
10	1	4.2	8	39	50	8	1,650.00
10	1.1	4.2	8	39	50	8	1,650.00
10	1.2	4.2	8	39	50	8	1,650.00
10	1.3	4.2	8	39	50	8	1,650.00
10	1.4	4.2	8	39	50	8	1,650.00
10	1.5	4.2	8	39	50	8	1,650.00
10	1.6	4.2	8	39	50	8	1,650.00
10	1.7	4.2	8	39	50	8	1,650.00
10	1.8	4.2	8	39	50	8	1,650.00
10	1.9	4.2	8	39	50	8	1,650.00
10	2	4.2	8	39	50	8	1,380.00
10	2.5	4.2	8	39	50	8	1,380.00
10	3	4.2	8	39	50	8	1,380.00
10	3.5	4.2	8	39	50	8	1,380.00

刃徑 (D)	刃長 (l ₁)	首徑 (d ₁)	柄徑 (d)	柄長 (l)	全長 (L)	刃數 (N)	價(支)格
10	4	4.2	8	39	50	8	1,380.00
10	4.5	4.2	8	39	50	8	1,380.00
10	5	4.2	8	39	50	8	1,380.00
12	0.5	4.4	10	39	50	8	2,000.00
12	0.6	4.4	10	39	50	8	2,000.00
12	0.7	4.4	10	39	50	8	2,000.00
12	0.8	4.4	10	39	50	8	2,000.00
12	0.9	4.4	10	39	50	8	2,000.00
12	1	4.4	10	39	50	8	1,800.00
12	1.2	4.4	10	39	50	8	1,800.00
12	1.3	4.4	10	39	50	8	1,800.00
12	1.5	4.4	10	39	50	8	1,800.00
12	1.6	4.4	10	39	50	8	1,800.00
12	1.8	4.4	10	39	50	8	1,800.00
12	2	4.4	10	39	50	8	1,540.00
12	2.5	4.4	10	39	50	8	1,540.00
12	3	4.4	10	39	50	8	1,540.00
12	3.5	4.4	10	39	50	8	1,540.00
12	4	4.4	10	39	50	8	1,540.00
12	4.5	4.4	10	39	50	8	1,540.00
12	5	4.4	10	39	50	8	1,540.00
12	6	4.4	10	39	50	8	1,540.00
13	0.5	4.4	10	39	50	8	2,200.00
13	0.6	4.4	10	39	50	8	2,200.00
13	0.7	4.4	10	39	50	8	2,200.00
13	0.8	4.4	10	39	50	8	2,200.00
13	0.9	4.4	10	39	50	8	2,200.00
13	1	4.4	10	39	50	8	1,900.00
13	1.2	4.4	10	39	50	8	1,900.00
13	1.5	4.4	10	39	50	8	1,900.00
13	1.6	4.4	10	39	50	8	1,900.00
13	1.8	4.4	10	39	50	8	1,900.00
13	2	4.4	10	39	50	8	1,620.00
13	2.5	4.4	10	39	50	8	1,620.00
13	3	4.4	10	39	50	8	1,590.00
13	3.5	4.4	10	39	50	8	1,590.00

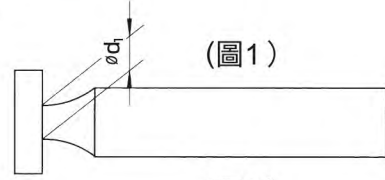
溝槽刀具 Cutters Series

KC 直柄鍵槽銑刀

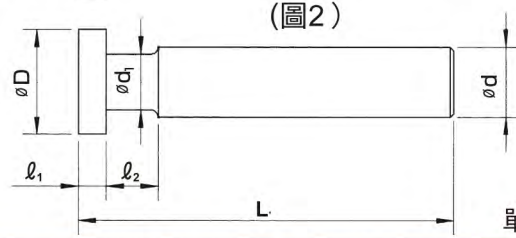
Keyseat Cutters



單面切削



(圖1)



(圖2)

單位：mm



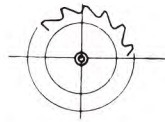
* 刃徑24mm以上，形狀為圖2。

刃徑 (D)	刃長 (ℓ ₁)	首徑 (d ₁)	柄徑 (d)	柄長 (ℓ)	全長 (L)	刃數 (N)	價(支)格
13	4	4.4	10	39	50	8	1,590.00
13	4.5	4.4	10	39	50	8	1,590.00
13	5	4.4	10	39	50	8	1,590.00
13	6	4.4	10	39	50	8	1,590.00
14	0.5	4.7	10	39	50	8	2,400.00
14	0.6	4.7	10	39	50	8	2,400.00
14	0.7	4.7	10	39	50	8	2,400.00
14	0.8	4.7	10	39	50	8	2,400.00
14	0.9	4.7	10	39	50	8	2,400.00
14	1	4.7	10	39	50	8	2,050.00
14	1.2	4.7	10	39	50	8	2,050.00
14	1.5	4.7	10	39	50	8	2,050.00
14	2	4.7	10	39	50	8	1,770.00
14	2.5	4.7	10	39	50	8	1,770.00
14	3	4.7	10	39	50	8	1,770.00
14	3.5	4.7	10	39	50	8	1,770.00
14	4	4.7	10	39	50	8	1,770.00
14	5	4.7	10	39	50	8	1,770.00
14	6	4.7	10	39	50	8	1,770.00
15	0.5	4.7	10	39	50	10	2,400.00
15	0.6	4.7	10	39	50	10	2,400.00
15	0.7	4.7	10	39	50	10	2,400.00
15	0.8	4.7	10	39	50	10	2,400.00
15	0.9	4.7	10	39	50	10	2,400.00
15	1	4.7	10	39	50	10	2,100.00
15	1.1	4.7	10	39	50	10	2,100.00
15	1.2	4.7	10	39	50	10	2,100.00
15	1.3	4.7	10	39	50	10	2,100.00
15	1.4	4.7	10	39	50	10	2,100.00
15	1.5	4.7	10	39	50	10	2,100.00
15	1.6	4.7	10	39	50	10	2,100.00
15	1.7	4.7	10	39	50	10	2,100.00
15	1.8	4.7	10	39	50	10	2,100.00
15	1.9	4.7	10	39	50	10	2,100.00
15	2	4.7	10	39	50	10	1,780.00
15	2.5	4.7	10	39	50	10	1,780.00
15	3	4.7	10	39	50	10	1,780.00
15	4	4.7	10	39	50	10	1,780.00
15	4.5	4.7	10	39	50	10	1,780.00
15	5	4.7	10	39	50	10	1,780.00
15	6	4.7	10	39	50	10	1,780.00
16	0.6	5	12	40	60	10	2,630.00

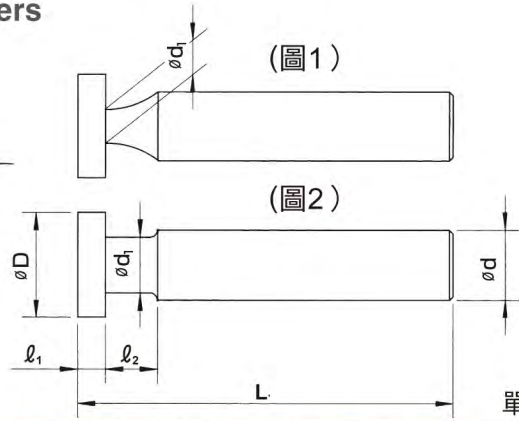
刃徑 (D)	刃長 (ℓ ₁)	首徑 (d ₁)	柄徑 (d)	柄長 (ℓ)	全長 (L)	刃數 (N)	價(支)格
16	1	5	12	40	60	10	2,200.00
16	1.5	5	12	40	60	10	2,200.00
16	2	5	12	40	60	10	1,850.00
16	2.5	5	12	40	60	10	1,850.00
16	3	5	12	40	60	10	1,850.00
16	3.5	5	12	40	60	10	1,850.00
16	4	5	12	40	60	10	1,850.00
16	5	5	12	40	60	10	1,850.00
16	6	5	12	40	60	10	1,850.00
16	7	5	12	40	60	10	1,850.00
16	8	5	12	40	60	10	1,850.00
17	5	7	12	40	60	12	2,165.00
18	0.5	7	12	40	60	12	3,100.00
18	0.6	7	12	40	60	12	3,100.00
18	0.7	7	12	40	60	12	3,100.00
18	0.8	7	12	40	60	12	3,100.00
18	1	7	12	40	60	12	2,700.00
18	1.2	7	12	40	60	12	2,700.00
18	1.5	7	12	40	60	12	2,700.00
18	1.6	7	12	40	60	12	2,700.00
18	1.8	7	12	40	60	12	2,700.00
18	2	7	12	40	60	12	2,450.00
18	2.5	7	12	40	60	12	2,450.00
18	3	7	12	40	60	12	2,200.00
18	3.5	7	12	40	60	12	2,200.00
18	4	7	12	40	60	12	2,200.00
18	5	7	12	40	60	12	2,200.00
18	6	7	12	40	60	12	2,200.00
18	7	7	12	40	60	12	2,300.00
18	8	7	12	40	60	12	2,300.00
19	0.7	8	12	40	60	12	3,170.00
19	1	8	12	40	60	12	2,650.00
19	1.5	8	12	40	60	12	2,650.00
19	2	8	12	40	60	12	2,490.00
19	2.5	8	12	40	60	12	2,490.00
19	3	8	12	40	60	12	2,265.00
19	3.5	8	12	40	60	12	2,265.00
19	4	8	12	40	60	12	2,265.00
19	4.5	8	12	40	60	12	2,265.00
19	5	8	12	40	60	12	2,265.00
19	6	8	12	40	60	12	2,265.00
19	7	8	12	40	60	12	2,265.00

KC 直柄鍵槽銑刀

Keyseat Cutters



單面切削



單位：mm



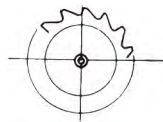
* 刃徑24mm以上，形狀為圖2。

刃徑 (D)	刃長 (l_1)	首徑 (d_1)	柄徑 (d)	柄長 (l)	全長 (L)	刃數 (N)	價(支)格
19	8	8	12	40	60	12	2,265.00
19	9	8	12	40	60	12	2,265.00
19	10	8	12	40	60	12	2,265.00
20	0.5	8	12	40	60	12	3,300.00
20	0.6	8	12	40	60	12	3,300.00
20	0.7	8	12	40	60	12	3,300.00
20	0.8	8	12	40	60	12	3,300.00
20	0.9	8	12	40	60	12	3,300.00
20	1	8	12	40	60	12	2,800.00
20	1.1	8	12	40	60	12	2,800.00
20	1.2	8	12	40	60	12	2,800.00
20	1.3	8	12	40	60	12	2,800.00
20	1.4	8	12	40	60	12	2,800.00
20	1.5	8	12	40	60	12	2,800.00
20	1.6	8	12	40	60	12	2,800.00
20	1.7	8	12	40	60	12	2,800.00
20	1.8	8	12	40	60	12	2,800.00
20	1.9	8	12	40	60	12	2,800.00
20	2	8	12	40	60	12	2,600.00
20	2.5	8	12	40	60	12	2,600.00
20	3	8	12	40	60	12	2,400.00
20	3.5	8	12	40	60	12	2,400.00
20	4	8	12	40	60	12	2,400.00
20	4.5	8	12	40	60	12	2,400.00
20	5	8	12	40	60	12	2,400.00
20	6	8	12	40	60	12	2,400.00
20	7	8	12	40	60	12	2,400.00
20	8	8	12	40	60	12	2,400.00
20	9	8	12	40	60	12	2,400.00
20	10	8	12	40	60	12	2,400.00
20	11	8	12	40	60	12	2,400.00
20	12	8	12	40	60	12	2,400.00
22	0.6	9	12	40	60	12	3,770.00
22	0.8	9	12	40	60	12	3,770.00
22	1	9	12	40	60	12	3,200.00
22	2	9	12	40	60	12	2,880.00
22	3	9	12	40	60	12	2,660.00
22	4	9	12	40	60	12	2,660.00
22	5	9	12	40	60	12	2,660.00
22	6	9	12	40	60	12	2,660.00
22	7	9	12	40	60	12	2,660.00
22	8	9	12	40	60	12	2,660.00

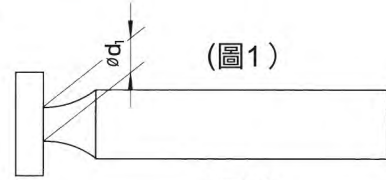
刃徑 (D)	刃長 (l_1)	首徑 (d_1)	柄徑 (d)	柄長 (l)	全長 (L)	刃數 (N)	價(支)格
22	9	9	12	40	60	12	2,660.00
22	10	9	12	40	60	12	2,660.00
22	12	9	12	40	60	12	2,660.00
24	0.5	10	12	40	65	14	4,690.00
24	0.8	10	12	40	65	14	4,690.00
25	0.5	10	12	40	65	14	4,680.00
25	0.6	10	12	40	65	14	4,680.00
25	0.7	10	12	40	65	14	4,680.00
25	0.8	10	12	40	65	14	4,680.00
25	1	10	12	40	65	14	3,860.00
25	1.1	10	12	40	65	14	3,860.00
25	1.2	10	12	40	65	14	3,860.00
25	1.3	10	12	40	65	14	3,860.00
25	1.4	10	12	40	65	14	3,860.00
25	1.5	10	12	40	65	14	3,860.00
25	1.6	10	12	40	65	14	3,860.00
25	1.7	10	12	40	65	14	3,860.00
25	1.8	10	12	40	65	14	3,860.00
25	1.9	10	12	40	65	14	3,860.00
25	2	10	12	40	65	14	3,600.00
25	2.5	10	12	40	65	14	3,600.00
25	3	10	12	40	65	14	3,300.00
25	3.5	10	12	40	65	14	3,300.00
25	4	10	12	40	65	14	3,300.00
25	4.5	10	12	40	65	14	3,300.00
25	5	10	12	40	65	14	3,300.00
25	6	10	12	40	65	14	3,300.00
25	7	10	12	40	65	14	3,300.00
25	8	10	12	40	65	14	3,300.00
25	9	10	12	40	65	14	3,300.00
25	10	10	12	40	65	14	3,300.00
25	11	10	12	40	65	14	3,300.00
25	12	10	12	40	65	14	3,300.00
26	1	10	12	40	65	14	4,750.00
26	1.5	10	12	40	65	14	4,750.00
26	2	10	12	40	65	14	4,350.00
26	3	10	12	40	65	14	4,000.00
26	4	10	12	40	65	14	4,000.00
26	5	10	12	40	65	14	4,000.00
26	6	10	12	40	65	14	4,000.00
28	0.5	10	12	40	65	14	5,880.00
28	1	10	12	40	65	14	4,880.00

KC 直柄鍵槽銑刀

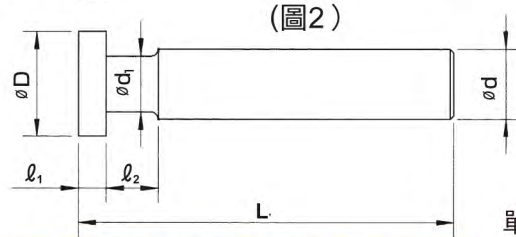
Keyseat Cutters



單面切削



(圖1)



(圖2)

單位：mm



* 刃徑24mm以上，形狀為圖2。

刃徑 (D)	刃長 (ℓ_1)	首徑 (d_1)	柄徑 (d)	柄長 (ℓ)	全長 (L)	刃數 (N)	價(支)格
28	1.5	10	12	40	65	14	4,880.00
28	2	10	12	40	65	14	4,500.00
28	3	10	12	40	65	14	4,100.00
28	4	10	12	40	65	14	4,100.00
28	5	10	12	40	65	14	4,100.00
28	6	10	12	40	65	14	4,100.00
28	7	10	12	40	65	14	4,100.00
28	8	10	12	40	65	14	4,100.00
28	10	10	12	40	65	14	4,100.00
28	12	10	12	40	65	14	4,100.00
30	0.5	10	12	45	70	14	6,380.00
30	0.6	10	12	45	70	14	6,380.00
30	0.7	10	12	45	70	14	6,380.00
30	0.8	10	12	45	70	14	6,380.00
30	1	10	12	45	70	14	5,500.00
30	1.5	10	12	45	70	14	5,500.00
30	2	10	12	45	70	14	5,000.00
30	2.5	10	12	45	70	14	5,000.00
30	3	10	12	45	70	14	4,620.00
30	3.5	10	12	45	70	14	4,620.00
30	4	10	12	45	70	14	4,620.00
30	4.5	10	12	45	70	14	4,620.00
30	5	10	12	45	70	14	4,620.00
30	6	10	12	45	70	14	4,620.00
30	7	10	12	45	70	14	4,620.00
30	8	10	12	45	70	14	4,620.00
30	10	10	12	45	70	14	4,620.00
30	12	10	12	45	70	14	4,620.00
32	1	10	12	45	70	14	5,800.00
32	1.5	10	12	45	70	14	5,800.00
32	2	10	12	45	70	14	5,300.00
32	3	10	12	45	70	14	5,000.00
32	4	10	12	45	70	14	5,000.00
32	5	10	12	45	70	14	5,000.00
32	6	10	12	45	70	14	5,000.00
32	7	10	12	45	70	14	5,000.00
32	8	10	12	45	70	14	5,000.00
32	10	10	12	45	70	14	5,000.00
32	12	10	12	45	70	14	5,000.00
35	0.5	10	12	50	75	16	8,450.00
35	1	10	12	50	75	16	7,000.00
35	1.5	10	12	50	75	16	7,000.00

刃徑 (D)	刃長 (ℓ_1)	首徑 (d_1)	柄徑 (d)	柄長 (ℓ)	全長 (L)	刃數 (N)	價(支)格
35	2	10	12	50	75	16	6,600.00
35	2.5	10	12	50	75	16	6,600.00
35	3	10	12	50	75	16	5,900.00
35	4	10	12	50	75	16	5,900.00
35	5	10	12	50	75	16	5,900.00
35	6	10	12	50	75	16	5,900.00
35	7	10	12	50	75	16	5,900.00
35	8	10	12	50	75	16	5,900.00
35	10	10	12	50	75	16	5,900.00
35	12	10	12	50	75	16	5,900.00
38	1	10	12	50	75	16	8,950.00
38	1.5	10	12	50	75	16	8,950.00
38	1.6	10	12	50	75	16	8,950.00
38	2	10	12	50	75	16	8,210.00
38	3	10	12	50	75	16	7,460.00
38	4	10	12	50	75	16	7,460.00
38	5	10	12	50	75	16	7,460.00
38	6	10	12	50	75	16	7,460.00
38	7	10	12	50	75	16	7,460.00
38	8	10	12	50	75	16	7,460.00
38	10	10	12	50	75	16	7,460.00
38	12	10	12	50	75	16	7,460.00
40	0.5	10	12	50	75	16	11,550.00
40	0.8	10	12	50	75	16	11,550.00
40	1	10	12	50	75	16	9,500.00
40	1.5	10	12	50	75	16	9,500.00
40	2	10	12	50	75	16	8,700.00
40	2.5	10	12	50	75	16	8,700.00
40	3	10	12	50	75	16	8,150.00
40	4	10	12	50	75	16	8,150.00
40	5	10	12	50	75	16	8,150.00
40	6	10	12	50	75	16	8,150.00
40	7	10	12	50	75	16	8,150.00
40	8	10	12	50	75	16	8,150.00
40	10	10	12	50	75	16	8,150.00
40	12	10	12	50	75	16	8,150.00
45	0.5	10	12	50	80	16	14,390.00
50	0.5	14	16	55	80	16	16,205.00
50	1.5	14	16	55	80	16	13,895.00
50	12	14	16	55	80	16	11,570.00
60	1	18	20	60	85	18	15,790.00
60	1.5	18	20	60	85	18	15,790.00

溝槽刀具

Cutters Series