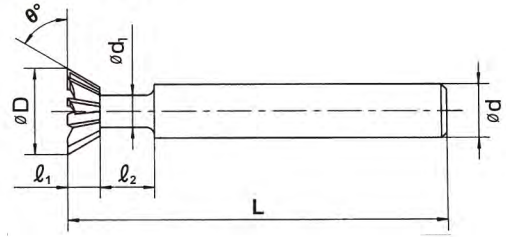
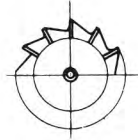


ACS 直柄鳩尾槽銑刀

Angular Cutters With Straight Shank



SKH51 高速鋼 刃徑 $+1/0$ 單角 $\pm 15'$ 柄徑 h8 P432

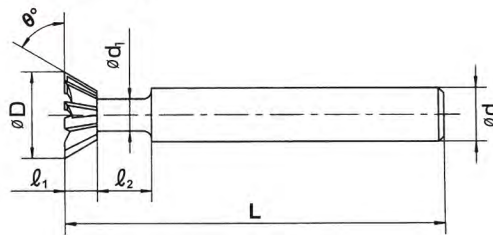
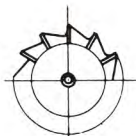
單位：mm

角度 (θ)	刃徑 (D)	刃長 (l_1)	首徑 (d_1)	首長 (l_2)	柄徑 (d)	全長 (L)	刃數 (N)	價(支)格
30°	25	4	6	15	12	67	10	4,740.00
30°	30	5	8	18	16	76	12	5,575.00
30°	35	6	8	18	16	79	12	7,520.00
30°	40	7	10	20	20	88	14	9,420.00
30°	50	8	12	25	25	98	16	15,155.00
30°	60	10	14	25	25	103	18	21,675.00
40°	20	5	5	12	10	62	10	3,700.00
40°	25	7	6	15	12	67	10	4,740.00
40°	30	8	8	18	16	76	12	5,575.00
40°	35	11	8	18	16	79	12	7,520.00
40°	40	13	10	20	20	88	14	9,420.00
40°	50	16	12	25	25	98	16	15,155.00
40°	60	18	14	25	25	103	18	21,675.00
45°	10	4	4	8	8	45	8	1,900.00
45°	12	4	5	10	8	50	8	2,080.00
45°	15	4	5	10	10	54	8	2,225.00
45°	20	5	6	12	10	62	10	3,080.00
45°	25	7	7	15	12	67	10	3,950.00
45°	30	8	9	18	16	76	12	4,645.00
45°	35	11	9	18	16	79	12	6,270.00
45°	40	13	11	20	20	88	14	7,850.00
45°	45	15	11	20	20	90	14	10,175.00
45°	50	16	13	25	25	98	16	12,630.00
45°	55	16	13	25	25	98	18	15,610.00
45°	60	18	15	25	25	103	18	18,060.00
50°	20	5	8	12	10	62	10	3,700.00
50°	25	7	9	15	12	67	10	4,740.00
50°	30	8	11	18	16	76	12	5,575.00
50°	40	13	13	20	20	88	14	9,420.00
50°	50	16	15	25	25	98	16	15,155.00
50°	60	18	17	25	25	103	18	21,675.00
55°	30	8	12	18	16	76	12	5,575.00
55°	40	13	13	20	20	88	14	9,420.00
55°	50	16	18	25	25	98	16	15,155.00
55°	60	18	20	25	25	103	18	21,675.00

溝槽刀具
Cutters Series

ACS 直柄鳩尾槽銑刀

Angular Cutters With Straight Shank



SKH51 高速鋼 刃徑 $^{+1}_0$ 單角 $\pm 15'$ 柄徑 h8 P432

單位：mm

角度 (θ)	刃徑 (D)	刃長 (l_1)	首徑 (d_1)	首長 (l_2)	柄徑 (d)	全長 (L)	刃數 (N)	價(支)格
60°	10	4	4	8	8	45	8	1,900.00
60°	12	5	5	10	8	50	8	2,080.00
60°	15	6	6	10	10	54	8	2,225.00
60°	20	7	8	12	10	64	10	3,080.00
60°	25	9	10	15	12	69	10	3,950.00
60°	30	11	12	18	16	79	12	4,645.00
60°	35	13	14	18	16	81	12	6,270.00
60°	40	17	16	20	20	92	14	7,850.00
60°	45	19	18	20	20	94	14	10,175.00
60°	50	22	20	22	25	104	16	12,630.00
60°	55	22	20	22	25	104	18	15,610.00
60°	60	25	22	22	25	110	18	18,060.00
70°	15	6	6	12	10	54	8	2,670.00
70°	20	7	8	12	10	64	10	3,700.00
70°	25	9	10	15	12	69	10	4,740.00
70°	30	11	12	18	16	79	12	5,575.00
70°	40	17	16	20	20	92	14	9,420.00
70°	50	22	20	22	25	104	16	15,155.00
70°	60	25	22	22	25	110	18	21,675.00
75°	10	4	4	8	8	45	8	2,285.00
75°	12	5	5	10	8	50	8	2,495.00
75°	15	6	6	12	10	54	8	2,720.00
75°	20	7	8	12	10	64	10	3,700.00
75°	25	9	10	15	12	69	10	4,740.00
75°	30	11	12	18	16	79	12	5,575.00
75°	35	13	14	18	16	81	12	7,520.00
75°	40	17	16	20	20	92	14	9,420.00
75°	45	19	18	20	20	94	14	12,210.00
75°	50	22	20	22	25	104	16	15,155.00
75°	55	22	22	22	25	104	18	18,735.00
75°	60	25	22	22	25	110	18	21,675.00
80°	20	7	8	12	10	64	10	3,700.00
80°	25	9	10	15	12	69	10	4,740.00
80°	30	11	12	18	16	79	12	5,575.00
80°	40	17	16	20	20	92	14	9,420.00
80°	50	22	20	22	25	104	16	15,155.00
80°	60	25	22	22	25	110	18	21,675.00

溝槽刀具

Cutters Series